

W

MAT-102

Driving Matter Deployment in Non-Consumer Applications

Rob Alexander | August 2023



Outline

- **Matter overview**
- **General Benefits for Non-Consumer Use Cases**
- **Benefits of Thread**
- **Building Management with Matter**
 - Commercial Buildings
 - Multi-Dwelling Units (MDU)
- **Matter Energy Management**
- **Silicon Labs Matter Solutions**

A large, bold, blue lowercase letter 'w' is positioned on the left side of the slide. It is partially overlaid by a thick, blue diagonal line that runs from the top left towards the bottom right. The background features several parallel, semi-transparent blue diagonal lines that create a sense of depth and movement.

Matter Overview

What is Matter?



1.1 NOW AVAILABLE

Driving the Matter Standard



"Members represented are a small sample of the companies supporting Matter."

- **Developed by over 300 industry-leading companies**
 - Represents value chain from Semiconductor to Ecosystem
- **Simple**
 - Easy to setup and control devices with multiple Ecosystems
- **Interoperable**
 - Devices with the Matter logo are interoperable by design
- **Reliable**
 - Reliable local connectivity works even if internet is down
- **Secure**
 - Authentication before joining and encrypted data transfer
- **Open**
 - The specification and software is open and Based on IP connectivity

Matter Devices

Devices supported by Matter today

LIGHTING & ELECTRICAL



MEDIA DEVICES



CONTROLLERS



BRIDGES



HVAC CONTROLS



WINDOW COVERINGS & SHADES



DOOR LOCKS



SAFETY & SECURITY SENSORS



Device types & category support in development

CAMERAS



ROBOT VACUUMS



AIR QUALITY CONTROL



AMBIENT PRESENCE SENSING



WHITE GOODS (APPLIANCES)



ENERGY MANAGEMENT



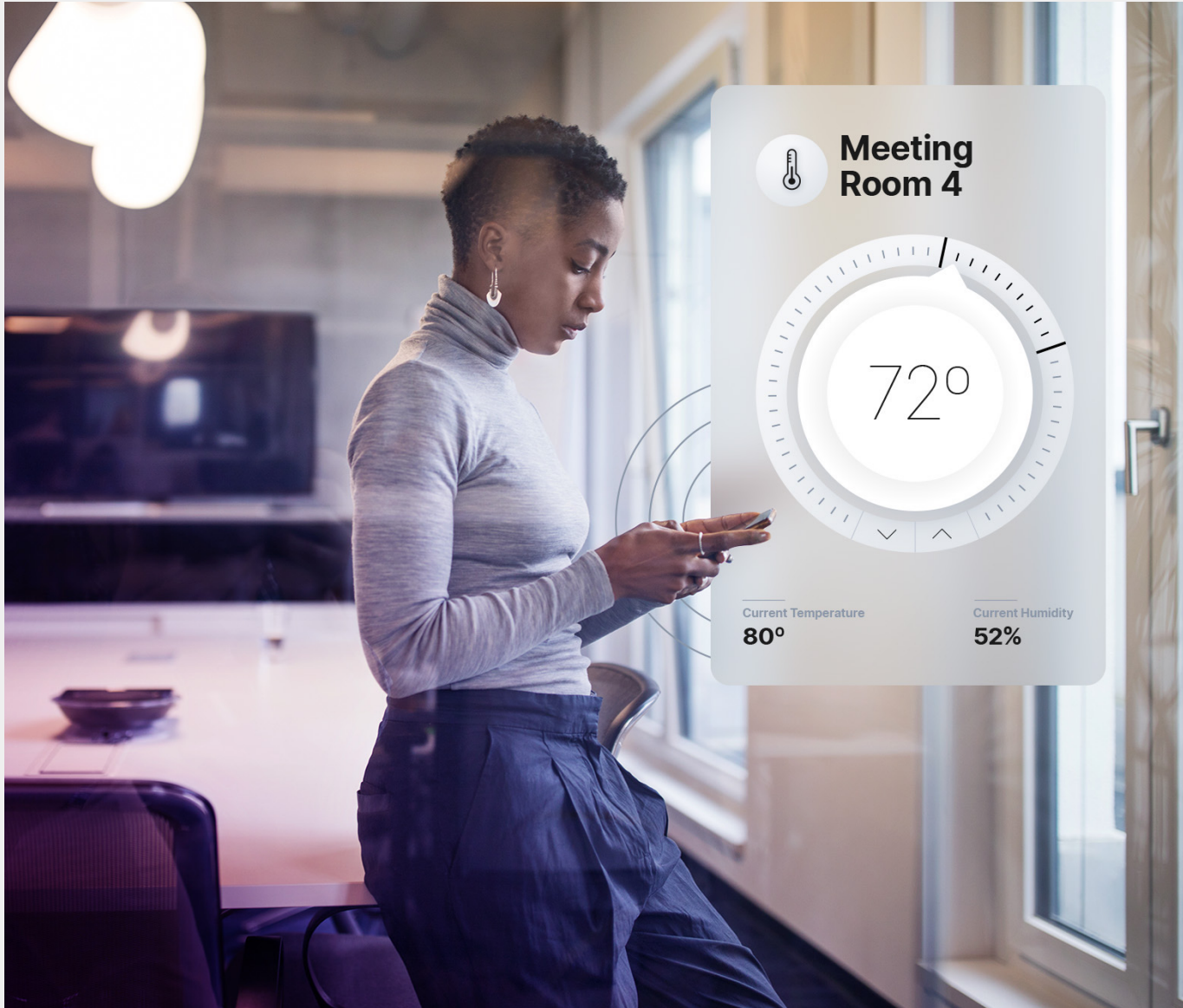
SMOKE & CO DETECTION



ACCESS POINTS



Matter Benefits for Non-Consumer Use Cases



■ Provisioning

- Built for mobile commissioning
- Does not require an Internet connection
- Validates the manufacturer and certification of the device
- Uses certificates for operational security

■ Non-Matter Device Interactions

- Existing IP networks can be used for a mix of non-Matter and Matter devices
- Non-Matter devices can be connected through the use of bridges to allow new integrations with voice assistants or mobile phones
 - ▶ Office space that could allow for occupants to open doors or simply change the comfort level in their offices

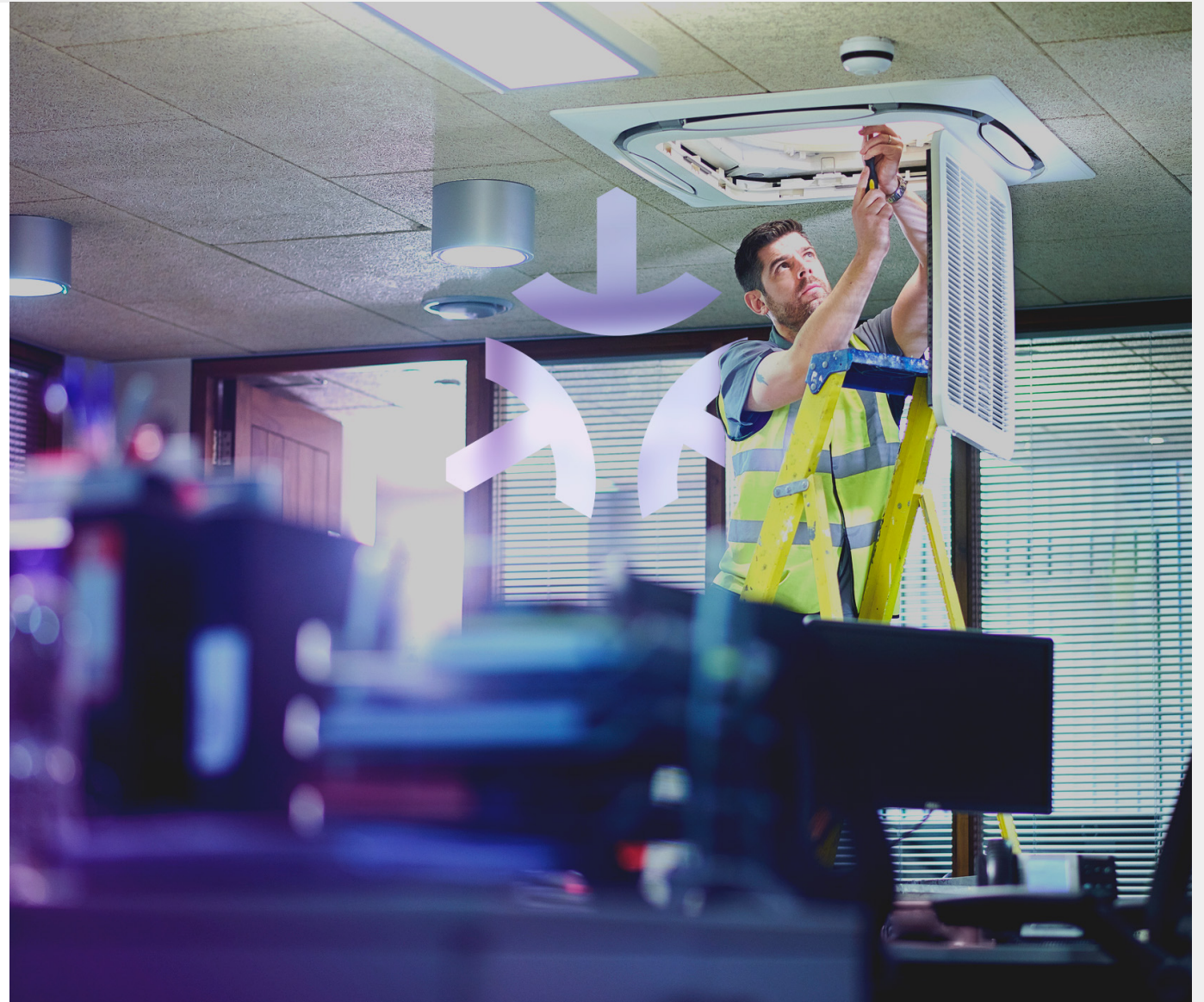
Matter Benefits for Non-Consumer Use Cases (continued)

■ Pre-provisioning the infrastructure

- Matter devices can be pre-installed with operational parameters and then installed into the building later
- Matter Thread is a great mechanism for building an organic network without large infrastructure
- Device to device communication is possible and can be expanded in the future

■ Overall

- Can create a complete system where the devices can be owned and managed by a separate entity than the users
- Matter standard and SDK is owned maintained by a non-profit standards development organization (SDO), known as the CSA.
- CSA continues to add new device types and features twice per year, Spring and Fall. Silicon Labs interested to help bring your device type to life.



A large, bold, blue lowercase letter 'w' is positioned on the left side of the slide. It is partially overlaid by a thick, blue diagonal line that runs from the top left towards the bottom right. This line is part of a series of parallel, semi-transparent blue lines that create a sense of depth and movement across the slide.

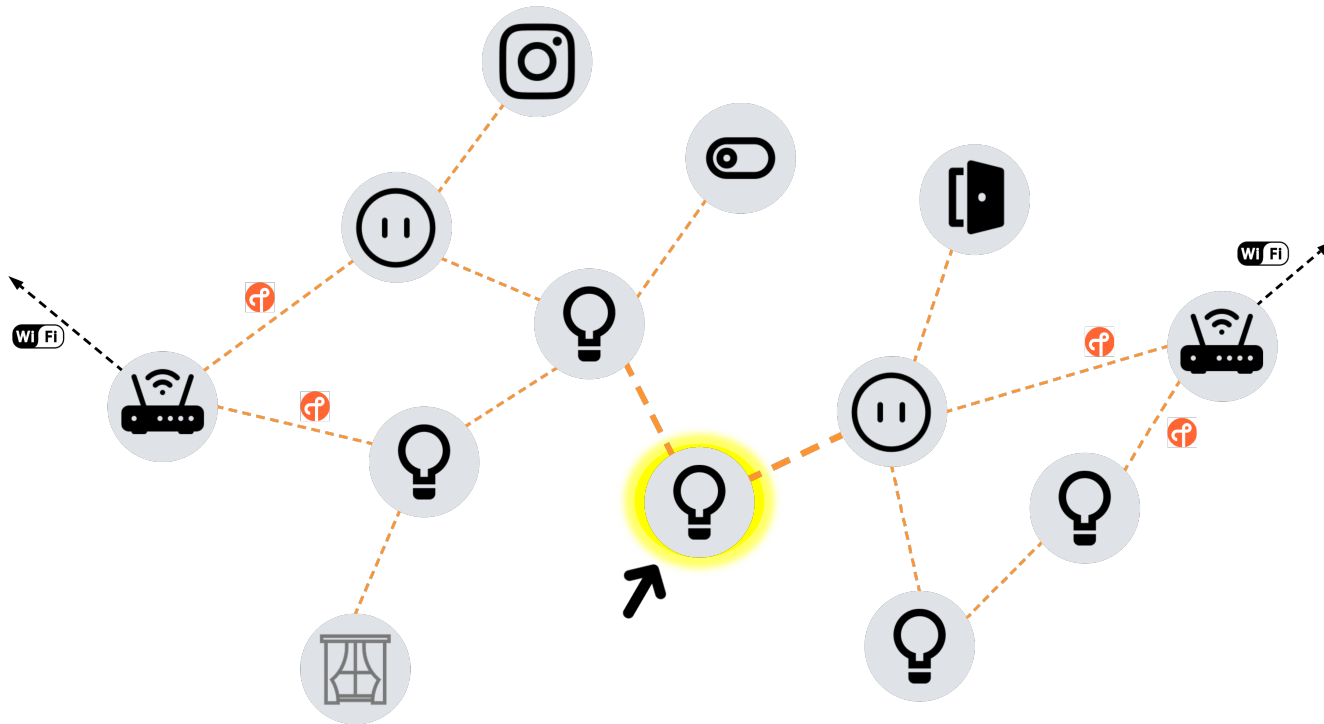
Benefits of Thread

Thread Networks



- Thread as a standard was released in 2015 and has had 3 major iterations
- IPv6 based and designed for low power IoT
- Thread has a mesh network design
- Thread networks are self-healing and largely support the ability to manage themselves
- Thread networks can be extended or cascaded using standard IP mechanisms to allow a building wide network
- Define a dedicated border router to allow transition between Wi-Fi or Ethernet, and native Thread devices
- Implementation is open-source with support by multiple chipset vendors including Silicon Labs

Thread Network Merging and Redundancy



- Additional router nodes can be added at a lower cost vs. dedicated Wi-Fi access points
- A routing Thread device does not have to be a dedicated device and still run its normal IoT function
- Routers can merge the islands deployed in a building to provide additional redundancy, lower latency, and broader coverage
- Thread Network segments can be independently setup to access the broader local network and Internet

A large, bold, blue lowercase letter 'w' is positioned on the left side of the slide. It is partially overlaid by a thick, blue diagonal line that runs from the top left towards the bottom right. The background features several parallel, semi-transparent blue diagonal lines that create a sense of depth and movement.

Building Management with Matter

Matter and Walled Gardens



- **Walled gardens provide isolation and protection for key systems**
- **Matter provides a large benefit as a standardized device element to walled ecosystems**
- **Matter still lets you have control with walled gardens limiting additional fabrics or devices based on policy**
- **Ultimately still puts control in the hands of the admin**

Considerations for Commercial Building



Retrofit is a common consideration for buildings

- **Interoperable Wireless technology is going to be key**

Multiple entities / interested parties are impacted

- **Building owner, System Integrator, IT manager, and tenant**

Multiple systems including Water, Air, Gas, Electric, Steam

- **Managed with 1 or more management systems**

Overlap with Commercial and Consumer Products

- **Products built for Industrial or Commercial can sometimes be resold for residential**

Commercial Building

- **Commercial Building Management will benefit from Matter Device types given the integration with IP**
 - Buildings have numerous technologies that require systems integrators to manage and understand a broad swath
 - IP provides a baseline of interoperability
- **Matter Bridges provide translation to non-Matter systems allowing isolation and controlled interactions**
 - **Example:** Security systems can use proprietary sensor networks but can enable automations for Matter enabled lights
- **Matter provides multi-fabric capabilities that can enable multiple systems to interact with a device**
 - Still provides high level of security requiring an admin to enable the device to be commissioned by another fabric
- **Matter Thread devices can function without connectivity to the broader building network**
- **Matter is a local area network and does not require Internet access**



Multi-Dwelling Units (MDU)



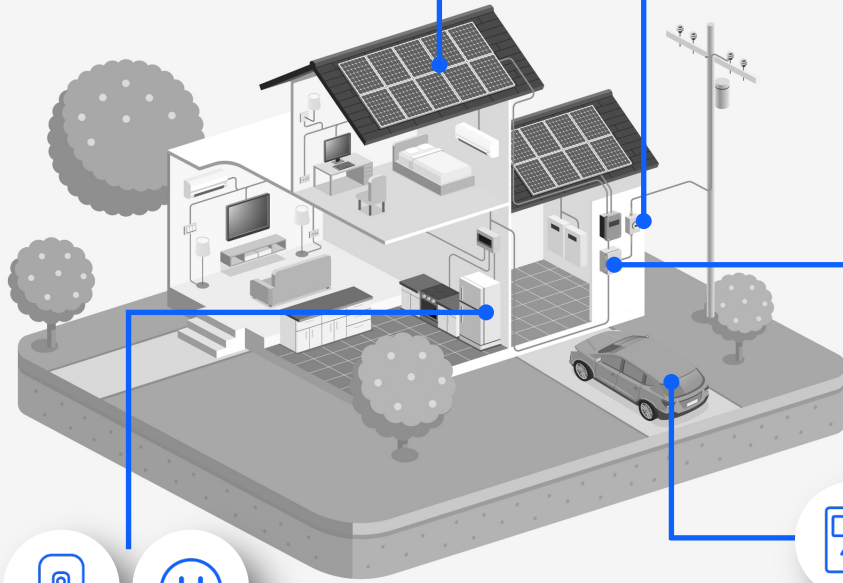
- **Multiple systems that want to enable IoT**
 - Wi-Fi Internet access
 - Lighting infrastructure
 - HVAC Control
 - Security Systems and monitoring
- **Tenants may want to integrate their own consumer devices**
 - Bring your own IoT Device
- **Multi-fabric enables sharing device management between tenant and owner systems**
- **Broader device selection than most single providers can build**

A large, bold, blue lowercase letter 'w' is positioned on the left side of the slide. It is partially overlaid by a thick, blue diagonal line that runs from the top left towards the bottom right. The background features several parallel, semi-transparent blue diagonal lines that create a sense of depth and movement.

Matter Energy Management

Energy Management

Panel-level Optimizers,
Microinverters



Smart Meter



Inverter



Storage

Residential Loads / Devices –
boilers, sockets, demand
response

High-level Use Cases

- Energy Monitoring – Balancing, Diagnostics, Insights
- Self-sufficiency – Maximizing Self-consumption
- Fuse Protection – Capacity not exceeded
- Tarriff based decisions – Shifting off from peak hours, Time-of-use, Incentives
- Peak Shaving & Demand Response – Reduce peak loads, match consumption with production

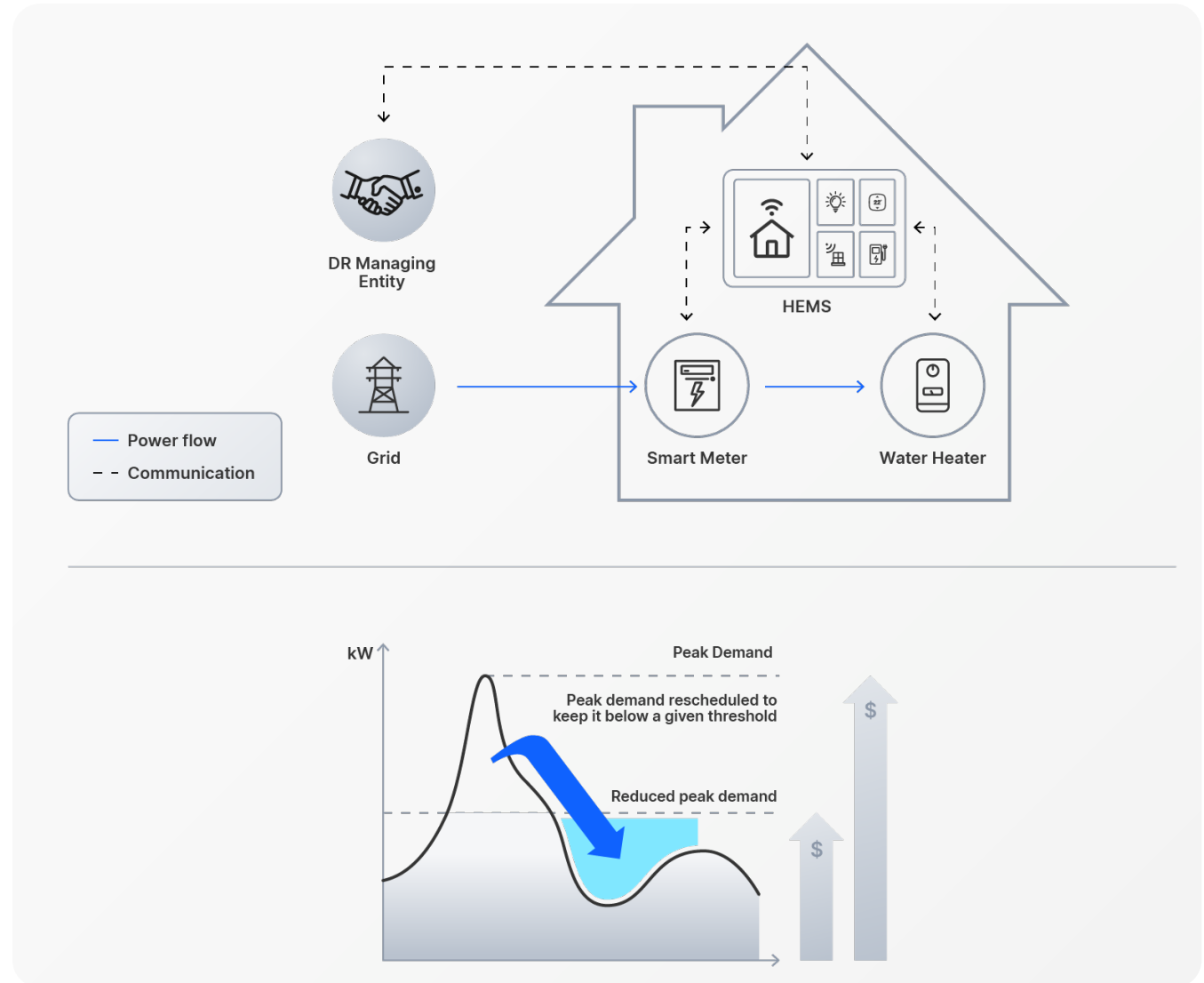
Demand and Load Control

■ Home load control

- Adjust daily use to utilize the available energy and prices
 - Schemes, time-of-use adjustments
- Move demand to off hours – water boilers, heating, pool pumps, appliances etc.
- Load EVs when it is most optimal for the home other consumption
- Make decisions based on energy spot-pricing

■ Utility-level demand response

- Utility to manage the grid utilization based on estimated energy production
 - Major home loads - EVSEs, HVACs, Heat allocators, water heaters
 - Incentives for consumers to participate
 - Specific hardware, or ecosystem like Matter as the enabler
- DR/LC events are pushed to HEMS get the through the internet or from a Smart meter



Backup Power



GENERATORS

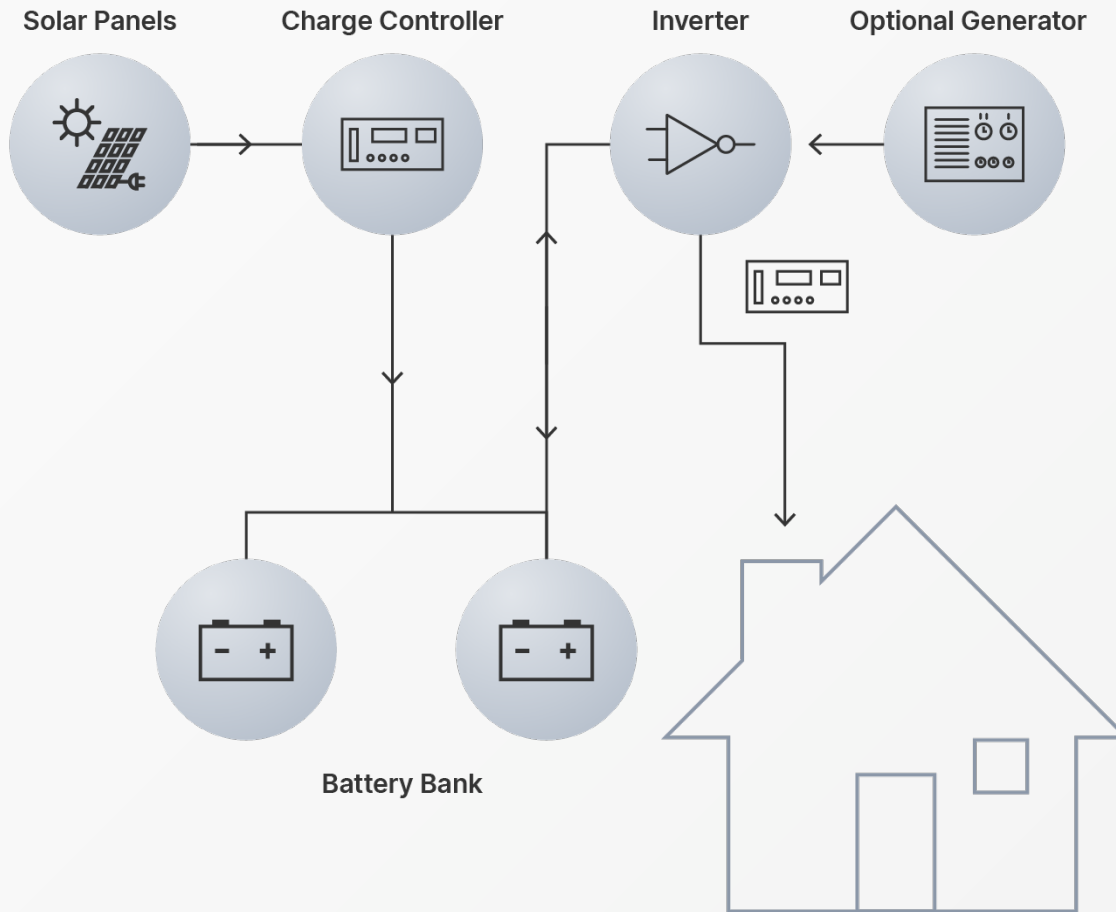
Backup energy on-demand
Blackout and brownout protection
Connect to the home energy system to enable additional use cases



STORAGE SYSTEMS

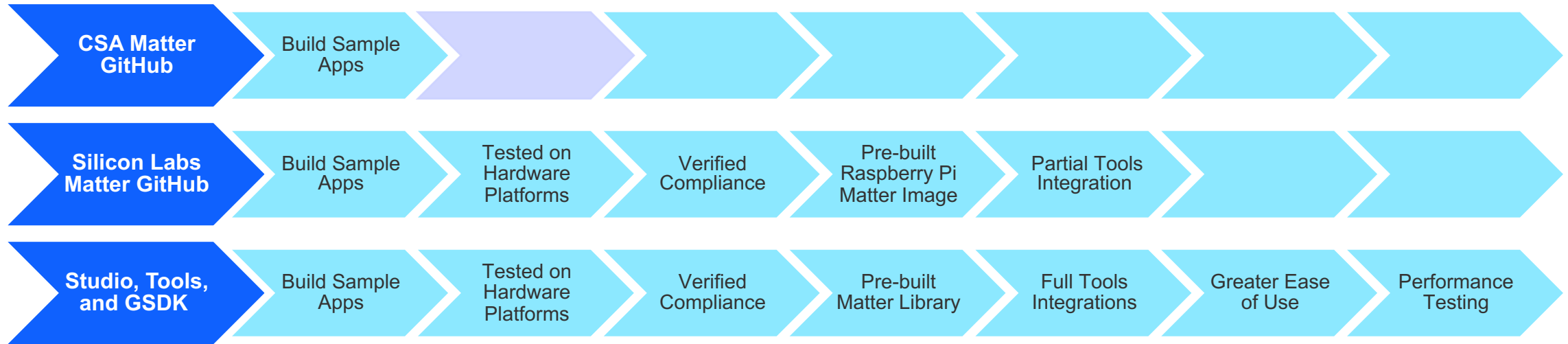
Store surplus energy
Blackout and brownout protection
Peak shaving, time-of-use, balancing

Matter Enables Multi-vendor Off-grid Solutions



- **For functional off-grid solutions several pieces required**
 - Energy production (e.g. solar)
 - Energy Storage
 - Inverter (DC to AC)
 - Management system to coordinate devices
 - Optional: Managing load based on available energy (appliances, HVAC, lighting, etc.)
- **Matter was created with interoperability in mind**
 - With standardized interfaces companies can focus on creating best products to each function
 - Customers will eventually win with more options from different vendors

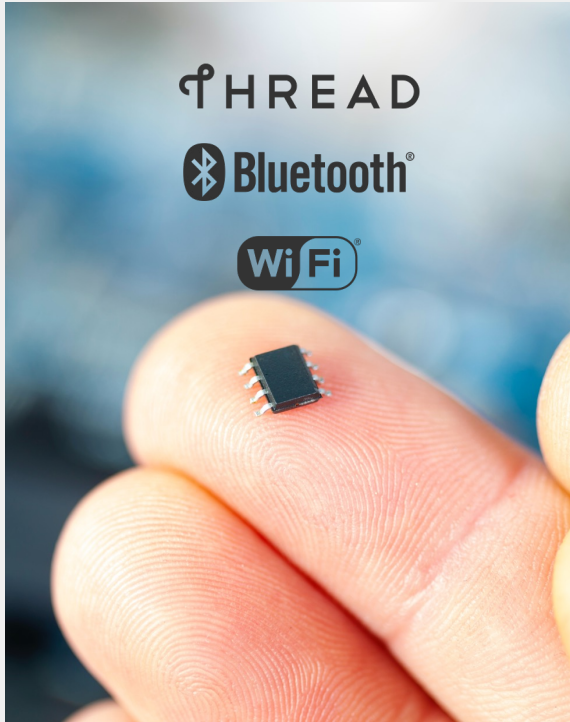
Paths to Matter End Products



- With CSA's Matter GitHub there are numerous gaps to getting to production.
- Our Silicon Labs Matter GitHub will provide better stability and an easier path, but there will still be gaps.
- Ultimately the Studio, Tools & GSDK path will provide the best possible path for mass market adoption making use of Simplicity Studio and other Developer tools (example: VS Code).

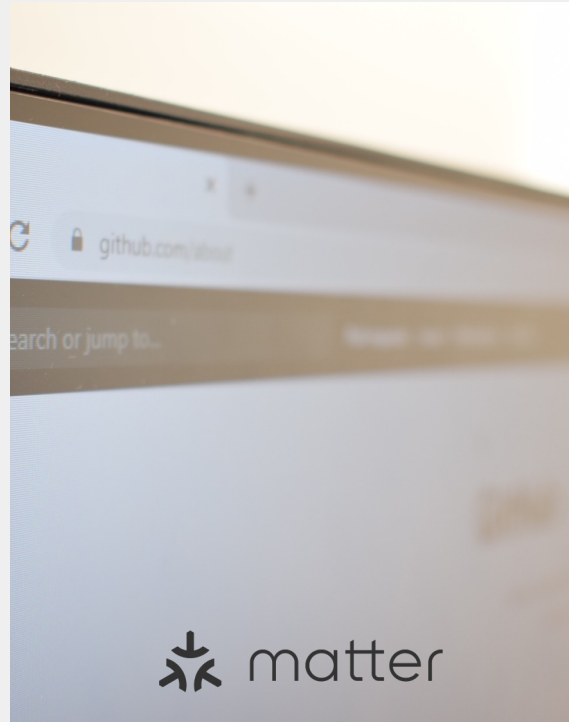


Silicon Labs Matter Solution



HARDWARE

Field Proven SoCs and Modules
Thread, Bluetooth and Wi-Fi
Certified Thread PHYs



SOFTWARE

One-stop-shop for all software
Full featured Matter solution
Built on top of IP stacks



TOOLS

Reference Applications
Command Line Interface support
LCD to display QR code
Studio support targeted Q4 2022



CERTIFICATION

+50,000 Wi-Fi and 802.15.4 end products deployed
Support for end-product certification
Matter certification Fall of 2022

W

Thanks!

